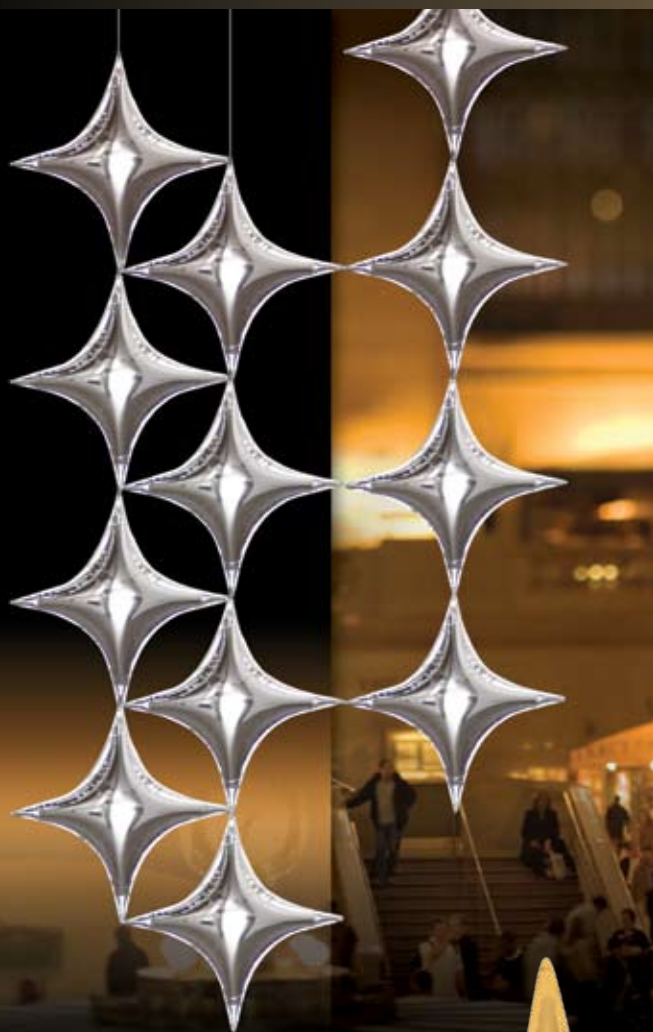


# Qualatex®

*Designing*  
with the  
**"WOW Factor"**  
—Exciting **NEW** Qualatex®  
*Decor Shapes*



Starpoint Metallic Silver  
JK #15707 40"

Starpoint Metallic Gold  
JK #15565 40"

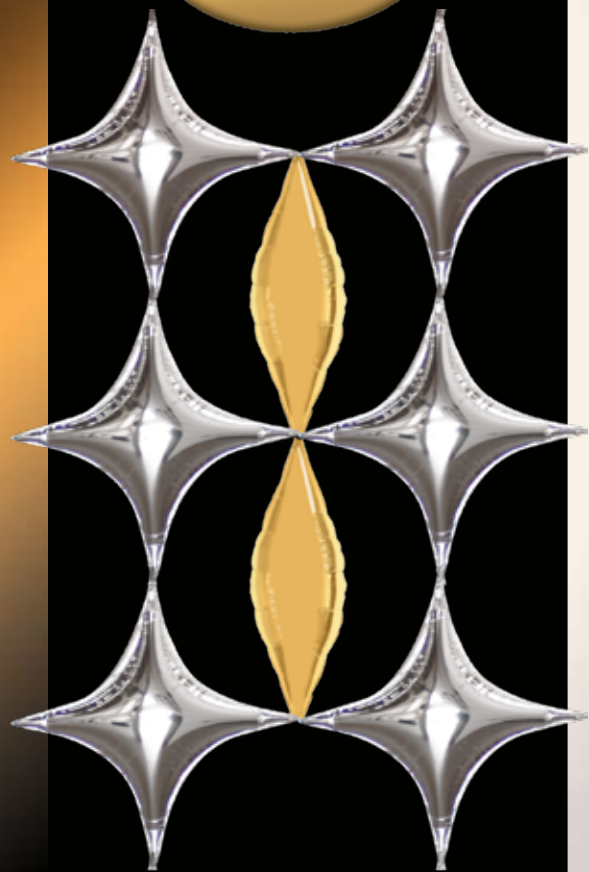
NO special tools  
required to attach  
them together—super  
easy to use!



THE  
**Very Best**  
BALLOONS



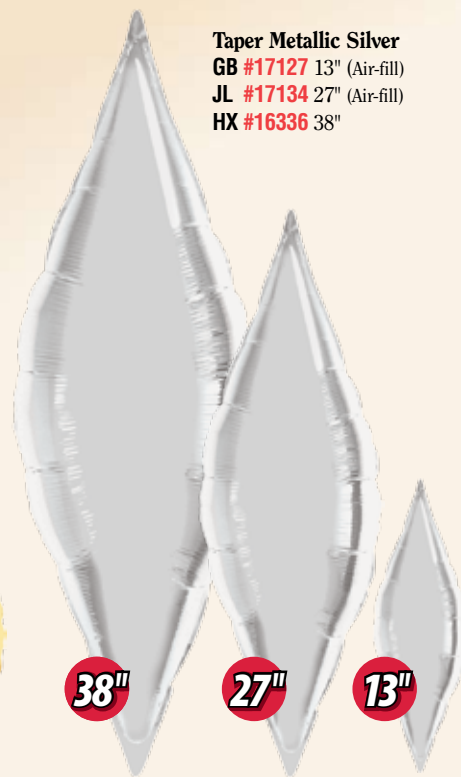
**Taper & Starpoint  
shapes are specially  
sized so they work  
together!**



**Taper Metallic Gold**  
GB #17125 13" (Air-fill)  
JL #17133 27" (Air-fill)  
HX #16335 38"



**Taper Metallic Silver**  
GB #17127 13" (Air-fill)  
JL #17134 27" (Air-fill)  
HX #16336 38"



Remember to heat seal 13" and 27" air-fill  
Tapers—see pg. 125 of the Qualatex® Everyday  
2008 catalogue to order a Small Bar Heat Sealer.

**16" Latex**



**Taper Green Leaf**  
GB #17135 13" (Air-fill)  
JL #17137 27" (Air-fill)

Make two pinch twists in the  
center of a 350Q, and wrap your  
"Taper Green Leaf" shapes into  
the twists to complete this flower.





Taper Swirl Silver

HT #15568 38"

Taper Swirl Gold

HT #15573 38"

Taper Swirl Sapphire Blue

HT #15571 38"

Taper Swirl Emerald Green

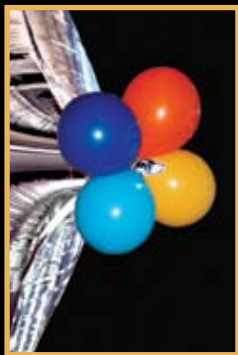
HT #15570 38"

Taper Swirl Ruby Red

HT #15569 38"



Qualatex  
Color Curls



Create simply stunning designs with **Qualatex® Decor Shapes**. Designed to be **tied or taped together**, these versatile balloons are easy to use and can create a variety of unique decor elements.

### Basic Inflation

The inflation technique for Taper and Starpoint Decor Shapes is similar to that of any Microfoil® balloon. Simply inflate with a foil regulator or air inflator and you're ready to start decorating.

### Taping Technique

1. Line up the top point of one inflated Decor Shape with the bottom point of the other, and overlap the excess foil that creates the pointed ends.
2. Place a small piece of clear packaging tape on either side of the overlapping points so one balloon is taped to another.
3. Repeat Steps 1-2 with additional Shapes as needed.
4. To hang from the ceiling, tightly tie a piece of monofilament to the top point of the balloon.

### Tying Technique

1. Tie the necks (or points) of two inflated Decor Shapes together tightly. Repeat with additional Shapes as needed.
2. Arrange the Tapers or Starpoints to create the desired design, such as a Column or Topiary.

To find a distributor, go to [qualatex.com](http://qualatex.com) and select "**Distributors - Qualatex**," or call **+44 1279 501090** or 0800 28 12 15 in the UK.



[qualatex.com](http://qualatex.com)